

# NSN

# Connect



## Remote Access Through A Trusted Partner

### Remote Control Invitations Invite Someone to Control your Computer

#### Table of contents:

- Glossary
- Installation Process
- Inviting Someone to Control your Computer

#### About NSN Connect and this document

**NSN Connect** has been developed to offer secure, quick-and-easy, online remote-access to your irrigation PC from any PC or Mac, and without the need to change the configuration of, or install any software on, the local computer.

This guide offers you a description of how you can invite someone else to remotely control your irrigation computer from any other computer and from any place in the world. Other detailed information about NSN Connect, including the installation process and quick start guides, is included in separate documents. For more information, go to [www.nsnconnect.com](http://www.nsnconnect.com).

Contact Toro NSN at 800-ASK-TORO if you need assistance.

#### Glossary of terms used in NSN Connect

The following terms are used in reference to NSN Connect:

- **Remote computer:** the irrigation computer being controlled remotely. You can only remotely control computers to which you've previously installed the NSN Connect service.

- **Local computer:** any computer that an NSN Connect user is using to remotely control a remote computer.

- **Systray icon:** a red Toro icon (Figure 1) displayed in the bottom right-hand corner of the screen of the irrigation computer to which the NSN Connect service has been installed. The icon changes according to the status of the service (running, stopped, or experiencing connection problems) and right clicking on it opens a popup menu of options.



#### Installation Process

A step-by-step description of the installation process is included in a separate document, *Installation Guide*.

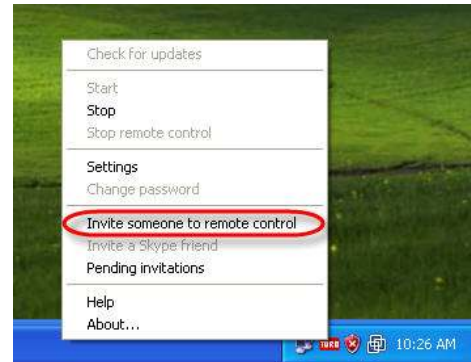
## Inviting Someone to Control Your Computer

It is possible to provide someone the one-time<sup>†</sup> ability to remote control your irrigation computer by email invitation. The invitation is good for only a set period of time (which you set when sending the invite). This is a simple process.

### Step 1. Create and Send the Invitation

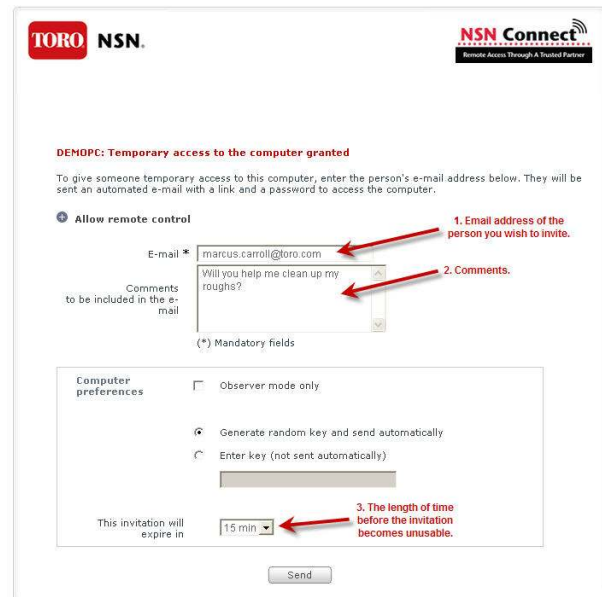
On your irrigation PC, right click on the Toro systray icon down by your clock, and click on *Invite someone to remote control*.

(You can also do this from the NSN Connect web site. Log into your NSN Connect account at [www.nsnconnect.com](http://www.nsnconnect.com), click on *Computer Preferences* next to your irrigation PC, then click on *Give Temporary Access*)



In the new window, enter the person's email address<sup>1</sup> that you wish to invite, and add any comments<sup>2</sup> to that person that you might want to be included in the invitation.

By default, the invitation will only be good for the next 15 minutes. You can extend that expiration time up to 24 hours<sup>3</sup>. This only determines how long the invitation is good for, not how long the person can be controlling your machine. Once they connect, they can remain connected as long as needed.

A screenshot of the NSN Connect web interface. At the top, there are logos for 'TORO NSN.' and 'NSN Connect Remote Access Through A Trusted Partner'. Below the logos, the heading is 'DEMOPC: Temporary access to the computer granted'. A sub-heading reads: 'To give someone temporary access to this computer, enter the person's e-mail address below. They will be sent an automated e-mail with a link and a password to access the computer.' The main form is titled 'Allow remote control'. It has an 'E-mail \*' field containing 'marcus.carroll@toro.com' with a red arrow pointing to it labeled '1. Email address of the person you wish to invite.' Below the email field is a 'Comments to be included in the e-mail' text area containing 'Will you help me clean up my roughs?' with a red arrow pointing to it labeled '2. Comments.'. Below the comments field is a note '(\*) Mandatory fields'. There is a 'Computer preferences' section with three radio buttons: 'Observer mode only' (unchecked), 'Generate random key and send automatically' (checked), and 'Enter key (not sent automatically)' (unchecked). Below this is a text input field. At the bottom of the form, there is a 'This invitation will expire in' dropdown menu set to '15 min' with a red arrow pointing to it labeled '3. The length of time before the invitation becomes unusable.'. A 'Send' button is at the bottom right.

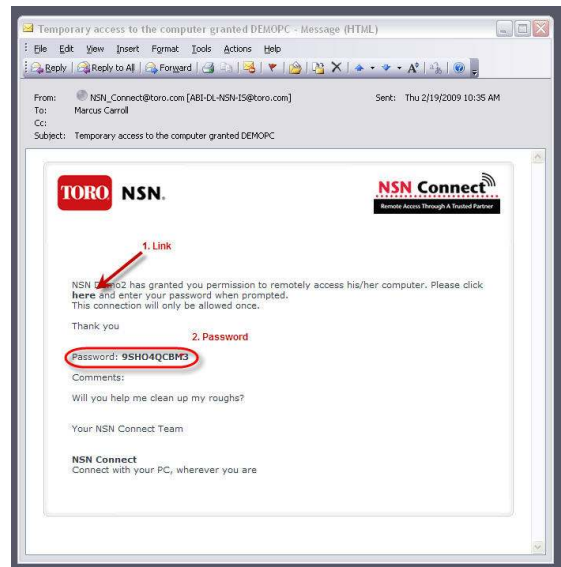
After clicking on send, you will see a confirmation message and the invitation has been sent.



## Step 2. Have the Invitee Take Control of Your Computer.

Within a minute or two, the person you invited will receive an email from NSN\_Connect@toro.com.

In this email, there is a link<sup>1</sup> and a password<sup>2</sup>.



Have the person click on the link, and he or she will be presented with this screen. Have them click on the computer icon on the right.



Once the icon is clicked, the person will be prompted for the password that came in the email.



A screenshot of a web-based password prompt window. The window has a white background and a thin grey border. In the top right corner, there is a red square logo with the word "TORO" in white, followed by "NSN" in black. Below this, the text "Type the access password provided in the invitation email" is displayed in red. Underneath, there is a label "DEMOPC" with a small computer icon to its left, followed by a colon and a text input field. Below the input field is a "Send" button. At the bottom of the window, there are two logos: "VeriSign" and "thawte".

When the password is entered, and the Send button is pressed, the person will be presented with the Connecting window, and will then see (and be able to control) your computer.



<sup>†</sup>**Note:** an invitation is only good for a one-time session. Once the person disconnects from your computer, they are unable to reconnect without you sending another invitation.



Toro NSN  
500 Chestnut, Ste 400  
Abilene, TX 79602

Support: 800-ASK-TORO  
Sales: 888-676-TORO  
Office: 888-876-TORO

[www.ToroNSN.com](http://www.ToroNSN.com) · [www.Toro.com](http://www.Toro.com)