

NSN

Connect



Remote Access Through A Trusted Partner

Quick Start Guide

Getting started with NSN Connect

Table of contents:

- Glossary
- Accessing your computers
- Closing connection
- Key features
- Security Advice
- Frequently Asked Questions (FAQs)
- Requirements

About NSN Connect and this document

NSN Connect has been developed to offer secure, quick-and-easy, online remote-access to your irrigation PC from any PC or Mac, and without the need to change the configuration of, or install any software on, the local computer.

This guide offers you a description of how you can start to remotely control your irrigation computer from any other computer and from any place in the world. Detailed information about the installation process is included in a separate document, *Installation Guide*. For more information, go to www.nsnconnect.com.

Contact Toro NSN at 800-ASK-TORO if you need assistance.

Glossary of terms used in NSN Connect

The following terms are used in reference to NSN Connect:

- **Remote computer:** your irrigation computer being controlled remotely. You can only remotely control the computer if you've previously installed the NSN Connect service.

- **Local computer:** any computer that an NSN Connect user is using to remotely control the irrigation computer.

- **Systray icon:** a red Toro icon (Figure 1) displayed in the bottom right-hand corner of the screen of the irrigation computer. The icon changes according to the status of the service (running, stopped, or experiencing connection problems) and right clicking on it opens a popup menu of options.



Installation Process

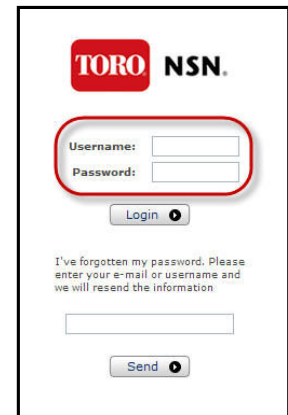
A step-by-step description of the installation process is included in a separate document, *Installation Guide*.

Accessing your irrigation computer

Accessing your irrigation computer is a simple two-step process. For a detailed explanation you can refer to the Installation leaflet.

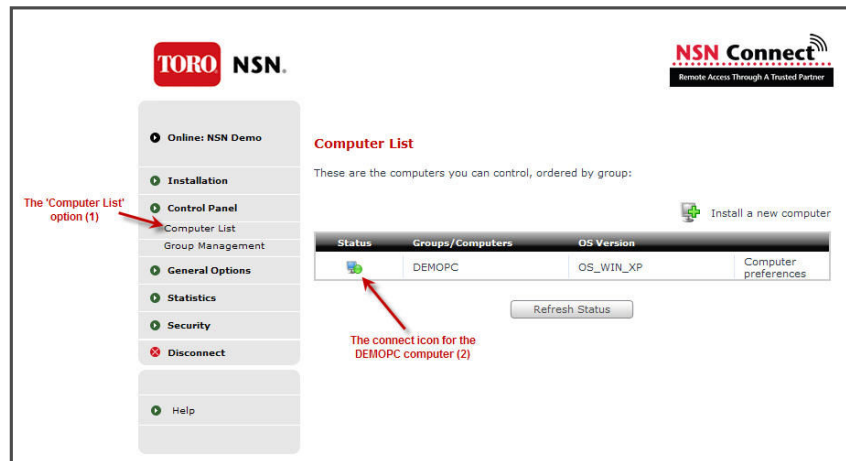
Step 1. Connect to the service

Go to www.nsnconnect.com and enter your username and password.



Step 2. Go to the Control Panel

Once logged in, you will see your computer list. This is also accessible via the option on the left of the screen.

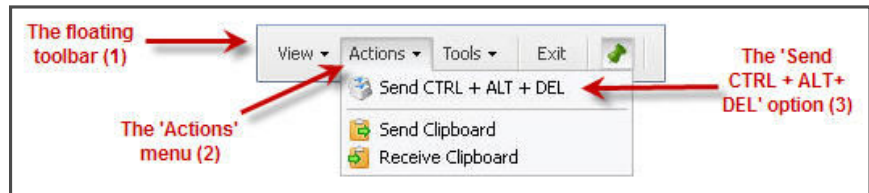


You can access your computer by clicking on its icon.

After clicking on the icon you will see a connecting message and a few seconds later you will see the desktop of the irrigation computer in a window on the local computer.



If the remote computer is locked you will need to unlock it. You can do this by choosing the 'Send CTRL + ALT + DEL option' (3) from the 'Actions' menu (2) of the floating toolbar (1). The floating toolbar (1) will initially appear at the top of the window displaying the remote computer's desktop.



Once you've selected the 'Send CTRL + ALT + DEL option', you can unlock the remote computer by entering the username and password that you normally use to logon to it.

Closing the connection

NSN Connect allows you to either close an individual remote-control session whilst remaining connected to the NSN Connect service, or to disconnect from the service and close all open remote-control sessions.

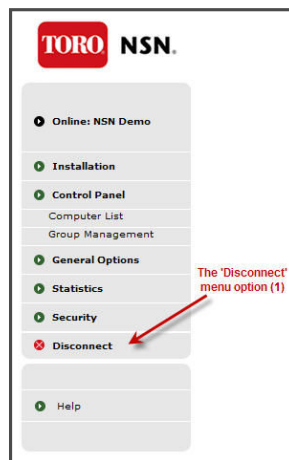
Close a remote-control session

To close the connection to a remote computer you only need to either close the remote-control window (1) or click on the 'Exit' option from the floating toolbar (2).



Doing this will only close your connection to that computer; other remote-control sessions will remain open and you will remain connected to the NSN Connect service.

Disconnect from the NSN Connect service



To disconnect from the NSN Connect service and close all open remote-control sessions, either close the main NSN Connect window or click on the 'Disconnect' option from the menu on its left-hand side.

NSN Connect features

USAGE FEATURES	
Multi-platform (PC, Mac, Pocket PC / Windows Mobile) remote control	Remotely control from various different operating systems: <ul style="list-style-type: none"> - Windows - Mac - iPhone - Pocket PC / Windows Mobile
Invitation to share desktop	Send other users an invitation to remotely control your computer (granting them temporary permission that expires within a maximum of 24 hours). The remote control can optionally be in observer mode only, and you can also view a list of all of your pending invitations.
Multi-browser	Compatible with Internet Explorer (including IE 7), Netscape, Firefox, Safari, Camino and Windows Mobile for Pocket PC.
Remote access from Pocket PC / Windows Mobile	Access your irrigation PC's data, documents and programs from your Pocket PC or Windows Mobile device.
Mini-map (for Pocket PC / Windows Mobile)	View the whole of the remote desktop in a miniature visualisation area and go to any part of a screen with a single click.
Zoom (for Pocket PC / Windows Mobile)	View a smaller or larger portion of the remote desktop.
Auto-scaling	Scale the image of the remote desktop so that it exactly fills the remote control window.
Full screen	Fill the local computer's screen with a scaled image of the whole of the remote desktop.
Variable colour-depth (2, 16, 256, 65536 and true colour)	Select the number of colors that are used to display the remote desktop. This can be set from the 'View' menu of the remote control window's floating toolbar. Keep in mind that increasing the number of colors may decrease the screen refresh rate.
View account activity	Show all connections that were made to a computer during a specific date-range.
Activity reports and notifications of unusual events	View reports on connections, security events, and access history, or a summary of computer access.
Keyboard, mouse and screen blocking	Increase connection confidentiality by automatically blocking the remote-computer's keyboard, mouse and screen.
Drag & Drop File Transfer	File transfer uses a quick-and-easy visual interface, which is split into two with the remote computer's directory tree on one side and the local computer's on the other.
Copy and Paste – Clipboard	Copy and paste text between the local and remote computers without having to transfer files.

SECURITY FEATURES

256-bit Encryption	All communication is sent encrypted with the 256-bit AES point-to-point algorithm.
Secure Access	Access is protected by password and security reports.
Computer password	Optionally specify that an additional password that must be entered in order to access a computer. In this case the user will have to enter up to three different passwords.
Automatic blocking of remote computer on disconnection	Automatically block the remote computer when you finish a remote-control session.
Auto-disconnection	Automatically disconnect from a remote-control session after the specified number of minutes.
Define a valid range of IPs for a computer	Define the range of IP addresses from which a remote connection will be permitted to this computer. Attempts to connect from addresses outside this range will not be permitted.
Set a timetable	Define time periods during which remote connections are permitted. Attempts to connect at times outside these periods will not be permitted.
Keycard	Choose the special authentication mode, and it will be necessary to enter a code before performing certain restricted actions.

About NSN Connect security

NSN Connect aims to provide its users with maximum security, and to meet that objective applies innovative solutions and measures to its information security.

For more information, please consult the NSN Connect Security Document at <http://www.nsnconnect.com>.

Advice on how to use NSN Connect with maximum security

- **User-password composition:** Toro NSN recommends that users' passwords are of at least 8 characters and include lower-case, upper-case and numerical characters.
- **Computer Password:** You can set an **additional password** that must be used in order to access your computer. This is set when the NSN Connect executable is installed in the computer.
- **Advanced Security:** You can also choose to use **keycard authentication**, which means that you will have to enter a code every time that you want to take a restricted action (such as, for example, perform a file transfer).
- **Fix timetable:** limit access to the computer to specific time-periods.
- **Define valid IPs for accessing a user's computers:** specify that access to a user's computers is only permitted from an IP within a specified range.
- **Define valid IPs for accessing NSN Connect:** specify that access to NSN Connect is only permitted from IPs within a specified range.

Valid User IP

For greater security, you can define a specific public IP address or range of addresses from which access to your account is allowed. Any login attempt from outside the valid IP range will be denied.

Username	Users	IP	Computer preferences
There are no IP addresses configured			

⊕ If you wish, you can add or modify a valid IP address

IP . . .

Range

IP . . .

Frequently Asked Questions (FAQs)

Can I use remote control with Mac computers?

Yes, you can remotely control your irrigation PC from:

- Mac
- Windows
- iPhone
- Pocket PC / Windows Mobile device.

Can I install NSN Connect on Windows 95, 98, ME and NT computers?

NSN Connect can be installed on Windows XP and Windows 7 computers.

Can other users control computers in which I have NSN Connect installed?

Yes: NSN Connect uses advanced technology and strict security measures to prevent unauthorized access to your computers, but it also has features through which you can grant access to other users.

Can I uninstall NSN Connect from a computer?

Yes: as with any other application, the NSN Connect service can be uninstalled from your computer at any moment. Contact Toro NSN at 1-800-ASK-TORO if you need assistance.

I've forgotten my password. How can I recover it?

Click on the "I've forgotten my password" option below the 'Login' button. Within a few minutes an e-mail will be sent to your registered e-mail address, and this e-mail will contain a link through which you will be able to generate a new password.

What do I need in order to connect to my irrigation computer?

To connect to your irrigation computer you must have previously installed the NSN Connect service on that computer, and the computer must be switched on and connected to the Internet. After that you only need to have access to a computer connected to the Internet.

System requirements

NSN Connect is a multi-platform product that allows you take remote control of your irrigation PC from any PC, Mac, iPhone, or Pocket PC / Windows Mobile device.

The computer used to access the irrigation computer **does not need to have NSN Connect installed on it.**

The system requirements for installing NSN Connect on your irrigation computer are described in the table below:

System requirements	
Microsoft Windows**	Windows XP or Windows 7 Internet Explorer 5.0 (or higher), Netscape 6.0 (or higher) or Firefox 1.0 (or higher)
(**) The NSN Connect service cannot be installed through a Remote Desktop session.	



Toro NSN
500 Chestnut, Ste 400
Abilene, TX 79602

Support: 800-ASK-TORO
Sales: 888-676-TORO
Office: 888-876-TORO

www.ToroNSN.com · www.Toro.com